

BUTTON UP SHIRTS

From Beach Party to the Boardroom



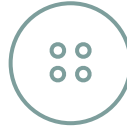
1. Select your style



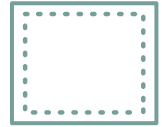
2. Fabric & Patterns



3. Pick your pockets



4. Button Options



5. Pick your labels

HERE'S HOW IT WORKS

We want to make it as easy as possible to design your own button up shirts. All you need to do is pick your style, choose your fabric type, select buttons and pockets, then add your labeling. Once you know what you want, head over to our order page and spec out your new button up shirt. Our creative team will make a detailed proof of your shirt and an account manager will send you a preview within 48 hrs.

- *Minimum Order is 144 pieces*
- *48 hour proofs*
- *14-16 week bulk Production*

1. SHIRT STYLE



SHORT SLEEVE



LONG SLEEVE

2. FABRIC AND PRINTING

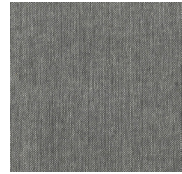
DIGITAL PRINTING

- 100% Cotton Fabric
- Close Pantone TPG color approximation
- Garment Washed with Silicone Finish



CHAMBRAY

- 100% Cotton Fabric
- 5 Color Options



3. PICK POCKETS



#1



#2



#3



#4

4. BUTTON OPTIONS



#1



#2



#3



#4



#5



#6



#7



#8



#9



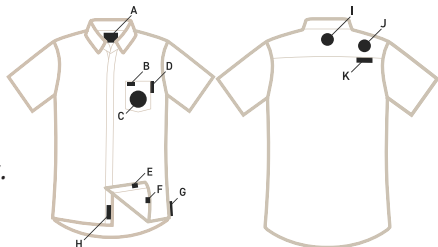
#10



#11

5. LABELING

Label your button up shirts inside and out with your branding. Choose from a number of styles and locations.



LEARN MORE AT

BRISTMFG.COM/BUTTONUPS |  